

# SCADA SERVICES

R L LAUGHLIN & CO, INC.  
www.RLLCO.com

R L Laughlin & Co has partnered with ScadaCore to give our customers the ability to monitor and control ANYTHING, ANYWHERE! Customers can utilize this service to monitor and control meters, compressors, and tank levels. Monitoring is also available on water, air, wind, weather, radiation, seismic activity, geothermal, sound, and MUCH more!

When you sign up, you get access to a personalized portal to view all of your units. Trend data is available graphically and in spreadsheet views. Alarm notifications are available via email, SMS, and/or voice messages. Units not in cellular covered areas? NO PROBLEM! We have satellite communications!

New customers to the site, will have their first month **FREE!**



## ViaCell-100 Features:

- Monitoring for Tank Level, Water Level, Compressors, Generators, Motors, Pumps, VFDs, Solar Arrays, Temperature, Wind Direction, and More
- Embedded 4G-LTE
- Up to 2-year Battery Life
- Magnetic Mount
- Solar-Panel Add-On Available
- 6 in x 5 in x 3 in
- Class 1 Div 2
- Temperature: -40°F to 185°F
- Connect Multiple Sensors to a Single ViaCell-100
- 4 AIN, 4 AOUT, 1 DIN, 1 DOUT

## ViaSat-10 Features:

- Satellite Monitoring for Pumpjacks, Compressors, Generators, Motors, Pumps, Rental Units, Run Status, and More.
- Vibration Sensor, 2 Digital Inputs, GPS
- Alarm Callout/Alarm Notifications via SMS, Email, and/or Voice Messages.
- Escalating Call Lists Can Be Set Up to Notify Available Staff of Shutdowns.
- Built-In Solar Panel and Rechargeable NiMH Battery
- 3.25 in x 7 in x 1.13 in
- Class I, Division 1, Groups A-D, T4
- Class I, Zone 0, AEx ia IIC T4 Ga
- ATEX/IECEX II 1 G, Ex ia IIC T4 Gat
- Temperature: -40°F to 149°F
- Magnetic Mount Option

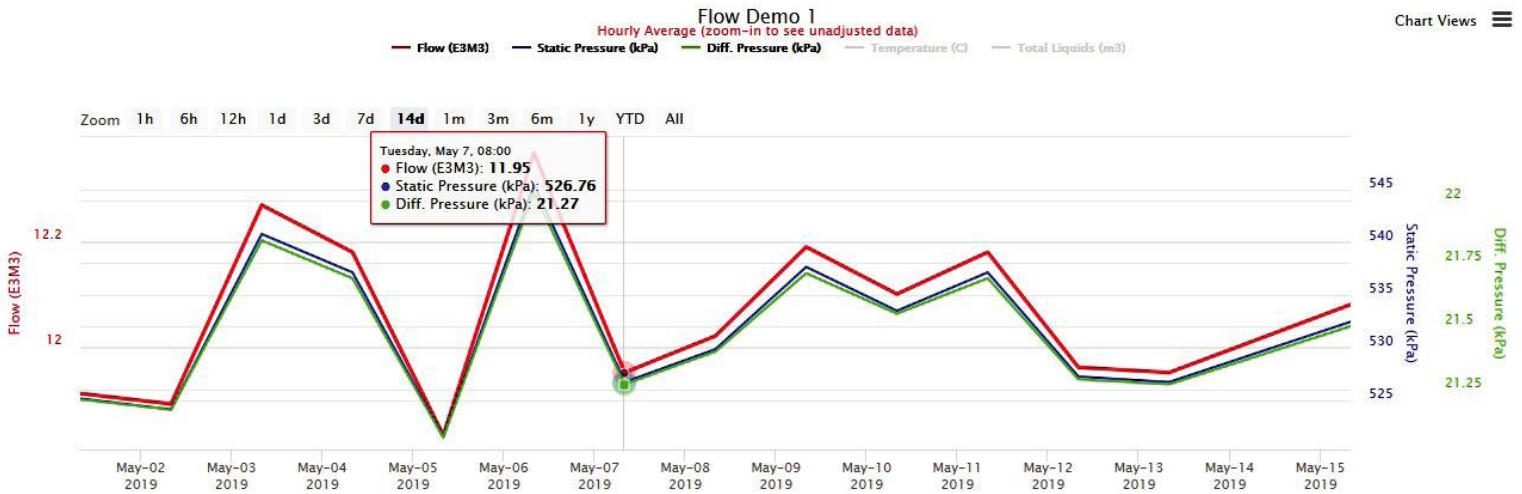


## ViaSat-100 Features:

- Satellite Monitoring and Controlling Assets for Pumpjacks, Pipelines, Tanks, Pressure Transmitters, Flow Meters, Pumps, Generators, and More.
- Two-Way Satellite Communication
- Elevation Angle: -5°F to 90°F
- 4 Analog to Digital In/Out
- RS-232 and RS-485
- Compatible with Modbus, ROCTalk, ABB, and Many Devices and Protocols
- CE, FCC, IC, Anatel, RCM Mark, IEC 60945, C1D2, SRRC, IFT, ICASA, FFA
- Class 1 Div 2
- Input Voltage: 9V to 32V
- Temperature: -40°F to 185°F
- 4.96 in x 4.96 in x 1.93 in

# Graphical Reports

SCADA IIoT allows for feature-rich, easy-to-use graphing analysis. This allows for clients to view hourly reports, daily reports, and much more. Graphs are interactive, allowing for clients to move their mouse along graph lines to display information at that given point. Zooming in on the X and Y axis gives the client more precise examination of data points. Graphs can be exported in PNG, JPG, PDF, or SVG.



# Reporting Made Easy

SCADA IIoT provides export features that can conform to almost any data format including, CSV, Excel, Pivot Table, and PDF. Users are given the option to export based on predefined data ranges or customized ranges. These exports can also be transferred to Fieldview, Prodmman, Avocet, and more.

| Report Date              | Flow (E3M3) | Flow Time (hr) | Static Pressure (kPa) | Diff. Pressure (kPa) | Temperature (C) | Total Liquids (m3) | Orifice (in) |
|--------------------------|-------------|----------------|-----------------------|----------------------|-----------------|--------------------|--------------|
| May 15 2019 08:00:01 MDT | 12.34       | 24             | 543.92                | 21.97                | 26.1            | 0.21               | 0.62         |
| May 14 2019 08:00:24 MDT | 12.08       | 24             | 532.48                | 21.5                 | 25.6            | 0.2                | 0.62         |
| May 13 2019 08:00:01 MDT | 11.95       | 24             | 526.76                | 21.27                | 25.3            | 0.2                | 0.62         |
| May 12 2019 08:00:01 MDT | 11.96       | 24             | 527.28                | 21.29                | 25.4            | 0.2                | 0.62         |
| May 11 2019 08:00:02 MDT | 12.18       | 24             | 537.16                | 21.69                | 25.8            | 0.21               | 0.62         |
| May 10 2019 08:00:00 MDT | 12.1        | 24             | 533.52                | 21.55                | 25.6            | 0.21               | 0.62         |
| May 09 2019 08:00:07 MDT | 12.19       | 24             | 537.68                | 21.71                | 25.9            | 0.21               | 0.62         |
| May 08 2019 08:00:01 MDT | 12.02       | 24             | 529.88                | 21.4                 | 25.5            | 0.2                | 0.62         |
| May 07 2019 08:00:01 MDT | 11.95       | 24             | 526.76                | 21.27                | 25.3            | 0.2                | 0.62         |
| May 06 2019 08:00:01 MDT | 12.37       | 24             | 545.48                | 22.03                | 26.2            | 0.21               | 0.62         |
| May 05 2019 08:00:00 MDT | 11.83       | 24             | 521.56                | 21.06                | 25.1            | 0.2                | 0.62         |
| May 04 2019 08:00:00 MDT | 12.18       | 24             | 537.16                | 21.69                | 25.8            | 0.21               | 0.62         |
| May 03 2019 08:00:03 MDT | 12.27       | 24             | 540.8                 | 21.84                | 26              | 0.21               | 0.62         |
| May 02 2019 08:00:02 MDT | 11.89       | 24             | 524.16                | 21.17                | 25.2            | 0.2                | 0.62         |
| May 01 2019 08:00:01 MDT | 11.91       | 24             | 525.2                 | 21.21                | 25.2            | 0.2                | 0.62         |
| Apr 30 2019 08:00:01 MDT | 11.83       | 24             | 521.56                | 21.06                | 25.1            | 0.2                | 0.62         |
| Apr 29 2019 08:00:01 MDT | 11.95       | 24             | 526.76                | 21.27                | 25.3            | 0.2                | 0.62         |
| Apr 28 2019 08:00:24 MDT | 12.34       | 24             | 543.92                | 21.97                | 26.1            | 0.21               | 0.62         |
| Apr 27 2019 08:00:01 MDT | 11.89       | 24             | 524.16                | 21.17                | 25.2            | 0.2                | 0.62         |
| Apr 26 2019 08:00:01 MDT | 12.11       | 24             | 534.04                | 21.57                | 25.7            | 0.21               | 0.62         |